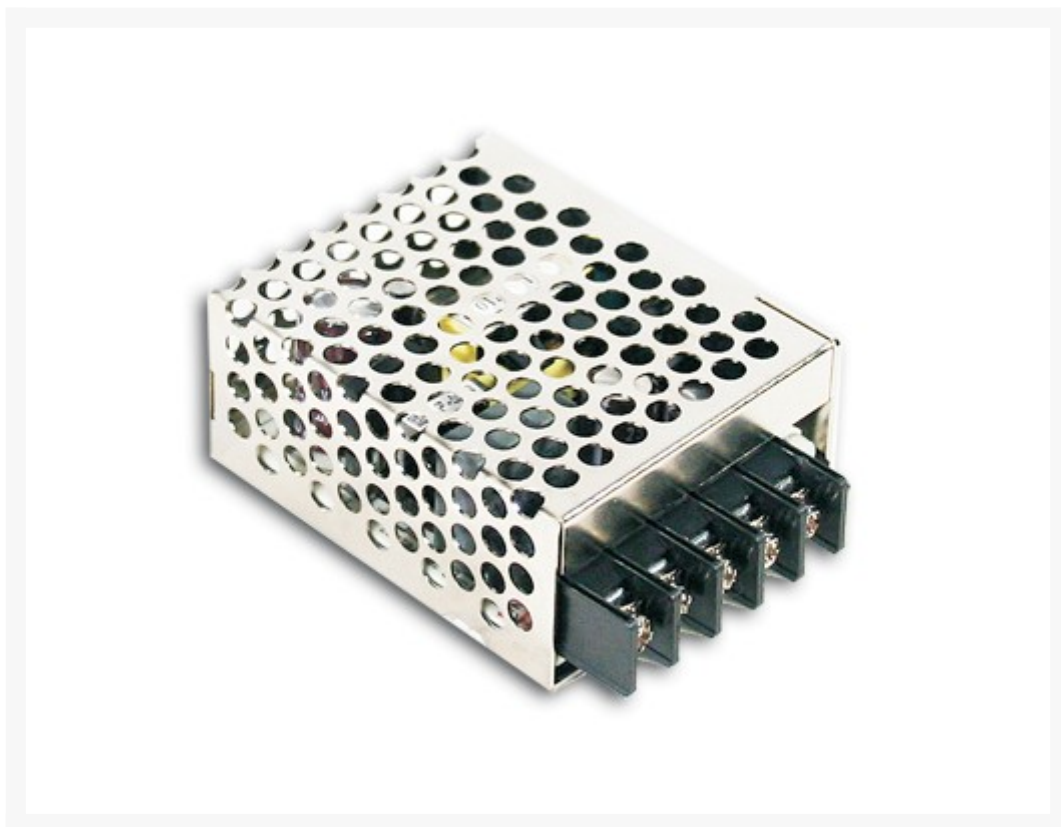


GESCHAKELDE VOEDING 15W 15V/1A

€ 13,95

Excl. BTW: € 11,53

Afbeeldingen



Beschrijving

Universal AC input / Full range

Protections: Short circuit / Overload / Over voltage / Over temperature

Cooling by free air convection

LED indicator for power on

100% full load burn-in test

All using 105C long life electrolytic capacitors

Withstand 300VAC surge input for 5 second

High operating temperature up to 70

Withstand 5G vibration test

High efficiency, long life and high reliability

MODEL RS-15-15

OUTPUT:

DC VOLTAGE 15V

RATED CURRENT 1A

CURRENT RANGE 0 ~ 1A
RATED POWER 15W
RIPPLE & NOISE (max.) 120mVp-p
OUTPUT VOLTAGE ADJ. RANGE 13.5 ~ 16.5V
VOLTAGE TOLERANCE +/-1.0%
LINE REGULATION +/-0.5%
LOAD REGULATION +/-0.5%
SETUP, RISE TIME 1000ms, 30ms/230VAC
HOLD TIME (Typ.) 70ms/230VAC at full load

INPUT:
VOLTAGE RANGE 88 ~ 264VAC
FREQUENCY RANGE 47 ~ 63Hz
EFFICIENCY(Typ.) 81%
AC CURRENT (Typ.) 0.35A/230VAC
INRUSH CURRENT (Typ.) COLD START 65A/230VAC
LEAKAGE CURRENT <2mA / 240VAC

PROTECTION:
OVER LOAD Above 105% rated output power
Protection type : Hiccup mode, recovers automatically after fault condition is
OVER VOLTAGE 17.25 ~ 20.25V
Protection type : Shut down o/p voltage, recovers automatically after temperature goes down
Dimensions 99*82*36mm (L*W*H)

Productinformatie

Artikelnummer	RS1515
Merk	MEANWELL
Is on Sale	Nee

