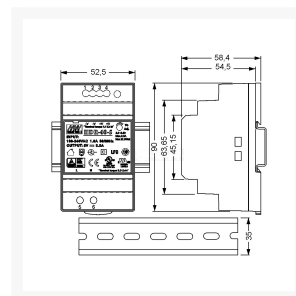
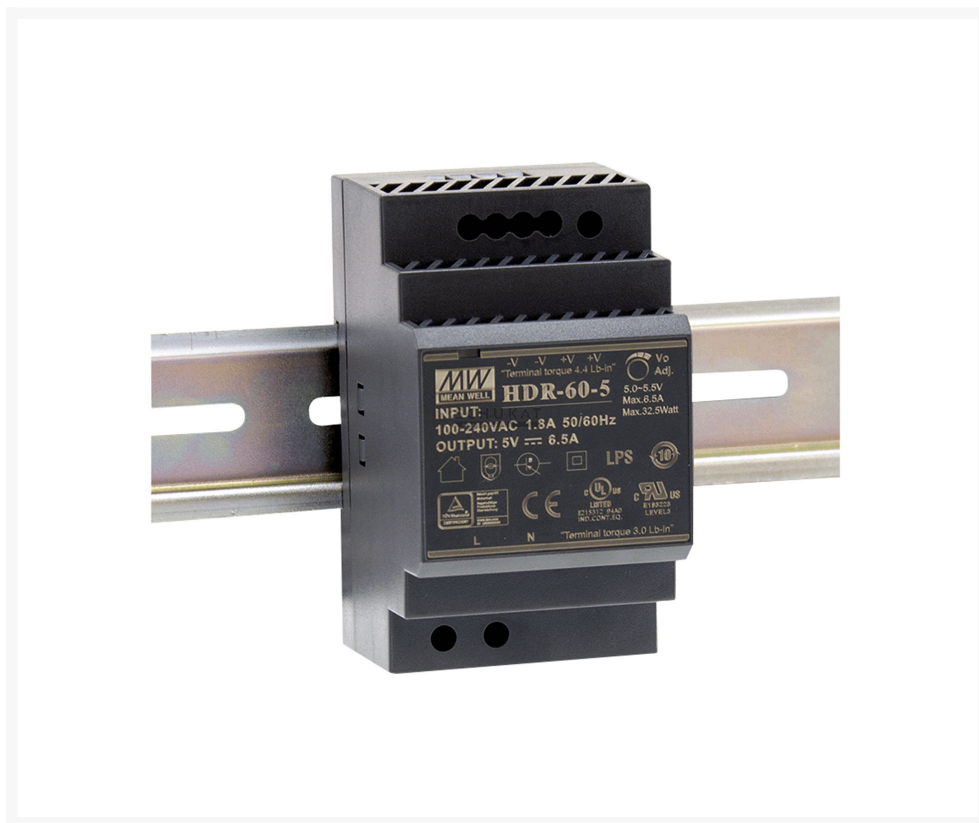


## DIN-RAIL 52.5MM VOEDING 32.5W 5V/6.5A

€ 32,95

Excl. BTW: € 27,23

### Afbeeldingen



### Beschrijving

#### Features

- Direct assembly on DIN Rail
- Enclosed case, Touch-guard screw terminals
- Universal input
- Overload protection, current limiting, auto recovery
- Protections: short circuit/over load/over voltage
- Low no load power consumption
- Power-on LED display
- Insulation Class II

#### Technical Specifications

Input Voltage:	85...264V AC (47...63Hz)
	120...370V DC
Input Inrush Current, Max.:	60A
Over Load Protection:	105...160%
Withstand Voltage, I/P-O/P:	3000V AC
Operating Temperature:	-30...+70°C
Weight:	190g

I/P = Input, O/P = Output

Part Nr.	$U_A$	$I_A$	$P_A$	$DU_A$	$U_{RN}$	h
	[V]	[A]	[W]	[%]	[mV <sub>p-p</sub> ]	[%]
HDR-60-5	5	0...6,5	32,5	2	80	85
HDR-60-12	12	0...4,5	54	1	120	88
HDR-60-15	15	0...4	60	1	120	89
HDR-60-24	24	0...2,5	60	1	150	90
HDR-60-48	48	0...1,25	60	1	240	91

$U_A$  = Output Voltage,  $I_A$  = Output Current Range,  $P_A$  = Output Power,  $DU_A$  = Output Voltage Tolerance,  $U_{RN}$  = Ripple & Noise, h = Efficiency

## Productinformatie

Artikelnummer	HDR6005
Merk	MEANWELL

