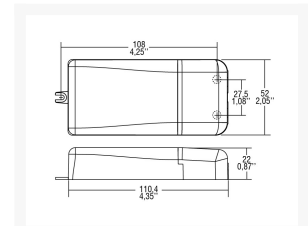


DC MINI JOLLY LED DRIVER 3-50VDC 100-380MA 19W 110X52X22MM

€ 42,50

Excl. BTW: € 35,12

Afbeeldingen



Model	Output Voltage (V)	Output Current (mA)	Power (W)	Dimensions (mm)
DC MINI JOLLY LC DALI BI	3-50	100-380	19	110x52x22
DC MINI JOLLY LC DALI	3-50	100-380	19	110x52x22
DC MINI JOLLY LC DALI BI	3-50	100-380	19	110x52x22
DC MINI JOLLY LC DALI	3-50	100-380	19	110x52x22

Beschrijving

Features

- Multipower driver supplied with dip-switch for the selection of the output current.
- IP20 independent driver, for indoor use (DC MINI JOLLY LC DALI).
- Class II protection against electric shock for direct or indirect contact (DC MINI JOLLY LC DALI).
- Driver for built-in use (DC MINI JOLLY LC DALI BI).
- It can be used for lighting equipment in protection class I and II (DC MINI JOLLY LC DALI BI).
- Active Power Factor Corrector.
- Current regulation $\pm 5\%$ including temperature variations.
- Input and output terminal blocks on the same side (wire cross-section up to 1,5 mm² / AWG15).
- Clamping screws on primary and secondary circuits for cables with diameter: PRI 3-8 mm / SEC 3-5 mm (DC MINI JOLLY LC DALI).
- Protections:
 - against overheating and short circuits;
 - against mains voltage spikes;
 - against overloads.
- Thermal protection = C.5.e.
- Double output impedance for use in household electrical appliances.

Productinformatie

Artikelnummer	151395
Merk	TCI

