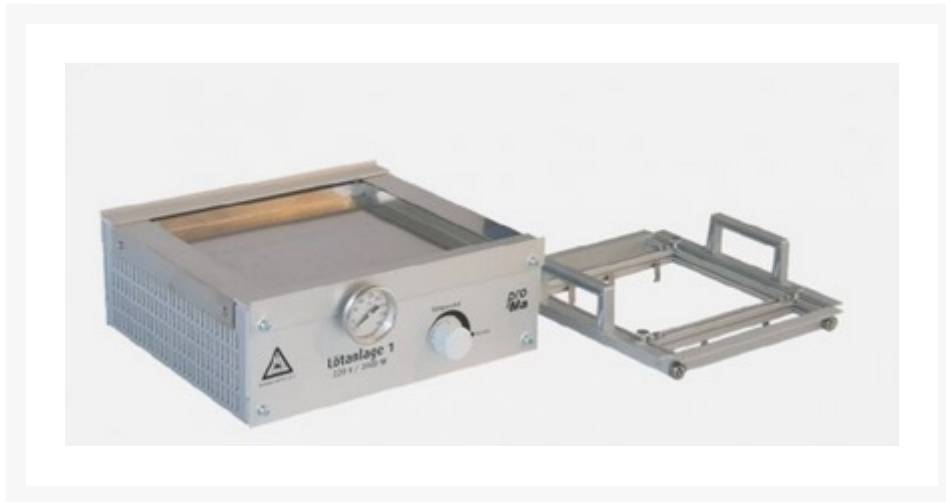


SOLDEERBAD 230V 2000W

€ 568,70

Excl. BTW: € 470,00

Afbeeldingen



Beschrijving

Features

- Anodized aluminium housing (LxWxH) 295x260x140mm
- Heater plate 230V/2000W, adjustable control
- Aluminium soldering tray with stainless steel lining 235x205x13mm
- Only requires about 4,5kg of soldering
- Bimetal clock thermometer (50° to 300°C)
- Soldering bogie with adjustable inner rails, max. board size 180x180mm
- Short heating time
- Operating method based on the stationary soldering bath

This soldering machine from Gie-Tec is based on the stationary soldering bath principle which makes use of a small volume of soldering and needs only a short populated circuit board. Simply and effortlessly connecting lugs, coils and transformers as well as electronic components can be tinned.

Productinformatie

Artikelnummer	SDB1639
Merk	Brand

