

# Eijlander Electronics Ede

..... THE BEST IN ELECTRONICS!

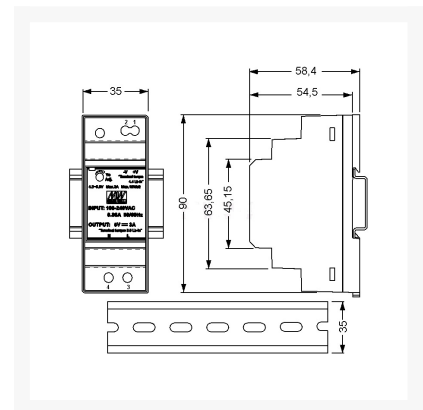
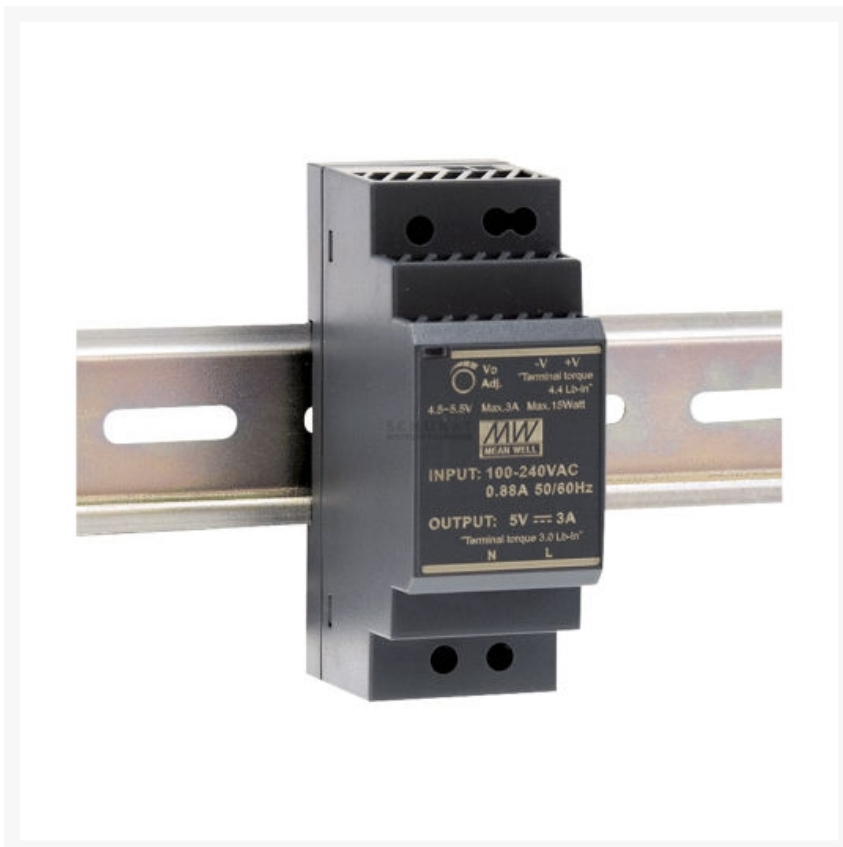
Zanderijweg 12,  
6717BM Ede  
T. 0318-757900

## DIN-RAIL 35MM VOEDING 30W 24V/1.5A

€ 20,07

Excl. BTW: € 16,59

### Afbeeldingen



### Beschrijving

### Features

- Direct assembly on DIN Rail
- Enclosed case, Touch-guard screw terminals
- Universal input
- Overload protection, current limiting, auto recovery
- Protections: short circuit/over load/over voltage
- Low no load power consumption
- Power-on LED display
- Insulation Class II

## Technical Specifications

Input Voltage:	85...264V AC (47...63Hz) 120...370V DC
Input Inrush Current, Max.:	45A
Over Load Protection:	105...160%
Withstand Voltage, I/P-O/P:	3000V AC
Operating Temperature:	-30...+70°C
Weight:	120g

I/P = Input, O/P = Output

Part Nr.	$U_A$	$I_A$	$P_A$	$DU_A$	$U_{RN}$	h
	[V]	[A]	[W]	[%]	[mV <sub>p-p</sub> ]	[%]
HDR-30-5	5	0...3	15	2	80	82
HDR-30-12	12	0...2	24	1	120	88
HDR-30-15	15	0...2	30	1	120	89
HDR-30-24	24	0...1,5	36	1	150	89
HDR-30-48	48	0...0,75	36	1	240	90

$U_A$  = Output Voltage,  $I_A$  = Output Current Range,  $P_A$  = Output Power,  $DU_A$  = Output Voltage Tolerance,  $U_{RN}$  = Ripple & Noise, h = Efficiency

## Productinformatie

---

Artikelnummer	HDR3024
Merk	MEANWELL

