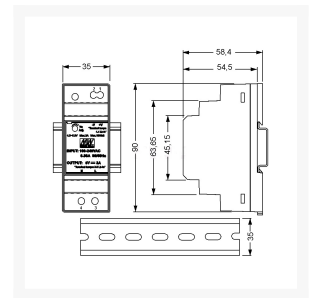
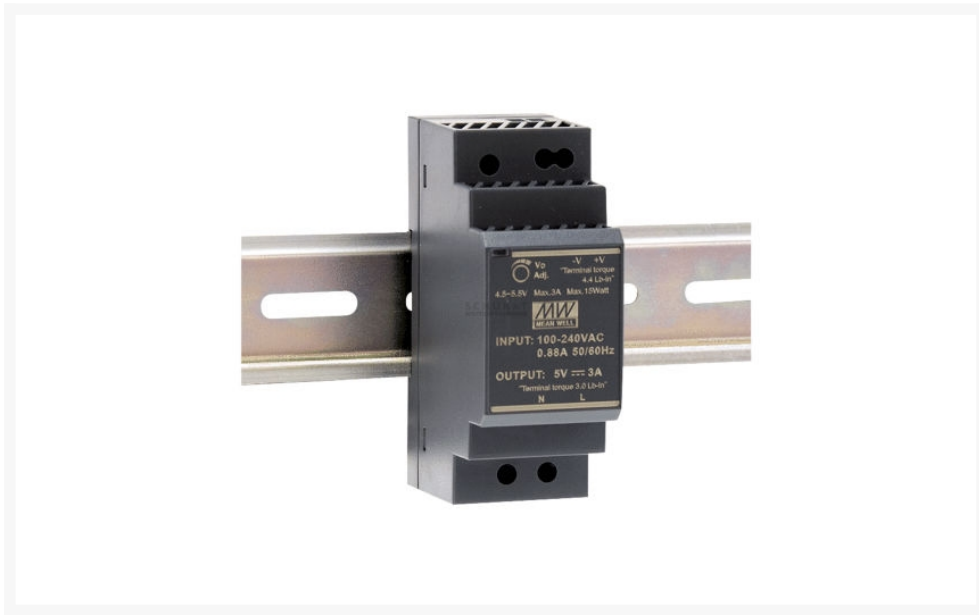


DIN-RAIL 35MM VOEDING 30W 15V/2A

€ 19,95

Excl. BTW: € 16,49

Afbeeldingen



Beschrijving

Features

- Direct assembly on DIN Rail
- Enclosed case, Touch-guard screw terminals
- Universal input
- Overload protection, current limiting, auto recovery
- Protections: short circuit/over load/over voltage
- Low no load power consumption
- Power-on LED display
- Insulation Class II

Technical Specifications

Input Voltage:

85...264V AC (47...63Hz)

120...370V DC

Input Inrush Current, Max.:	45A
Over Load Protection:	105...160%
Withstand Voltage, I/P-O/P:	3000V AC
Operating Temperature:	-30...+70°C
Weight:	120g

I/P = Input, O/P = Output

Part Nr.	U_A	I_A	P_A	DU_A	U_{RN}	h
	[V]	[A]	[W]	[%]	[mV _{p-p}]	[%]
HDR-30-5	5	0...3	15	2	80	82
HDR-30-12	12	0...2	24	1	120	88
HDR-30-15	15	0...2	30	1	120	89
HDR-30-24	24	0...1,5	36	1	150	89
HDR-30-48	48	0...0,75	36	1	240	90

U_A = Output Voltage, I_A = Output Current Range, P_A = Output Power, DU_A = Output Voltage Tolerance, U_{RN} = Ripple & Noise, h = Efficiency

Productinformatie

Artikelnummer	HDR3015
Merk	MEANWELL

