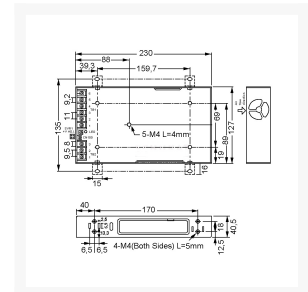


GESCHAKELDE VOEDING SINGLE OUTPUT 500W 27V/18,6A

€ 119,00

Excl. BTW: € 98,35

Afbeeldingen



Beschrijving

Features

- Enclosed case, built-in fan, screw terminals
- Universal input
- Overload protection, current limiting, auto recovery
- Protections: short circuit/over load/over voltage
- Built-in active PFC function
- Low profile
- Built-in remote On/Off control
- Built-in remote sense

Technical Specifications

Input Voltage:	85...264V AC (47...63Hz)
	120...370V DC
Input Inrush Current, Max.:	40A
Leakage Current, Max.:	2mA
Output Voltage Adjustment:	-5/+10%
Over Load Protection:	105...130%
Withstand Voltage	
I/P-O/P:	3000V AC
I/P-FG:	2000V AC
O/P-FG:	500V AC
Operating Temperature:	-30...+70°C
Weight:	1300g

I/P = Input, O/P = Output, FG = Frame Ground

Part Nr.	U_A	I_A	P_A	DU_A	U_{RN}	h
	[V]	[A]	[W]	[%]	[mV _{p-p}]	[%]
RSP-500-3.3	3,3	0...90	297	2	120	81
RSP-500-4	4	0...90	360	2	120	83
RSP-500-5	5	0...90	450	2	150	84
RSP-500-12	12	0...41,7	500,4	1	150	88
RSP-500-15	15	0...33,4	501	1	150	88
RSP-500-24	24	0...21	504	1	150	89
RSP-500-27	27	0...18,6	502,2	1	150	89,5
RSP-500-48	48	0...10,5	504	1	150	90,5

U_A = Output Voltage, I_A = Output Current Range, P_A = Output Power, U_{adj} = Output Voltage Adjustment, DU_A = Output Voltage Tolerance, U_{RN} = Ripple & Noise, h = Efficiency

Productinformatie

Artikelnummer	RSP50027
Merk	MEANWELL

