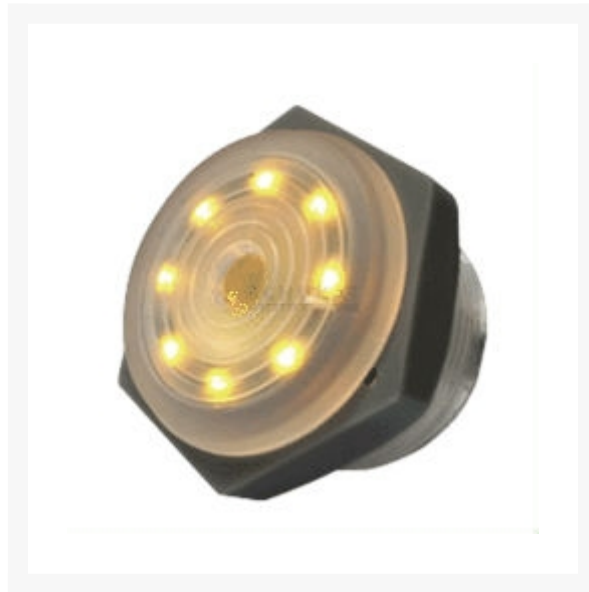


PIEZO 12VDC/18MA/3.5KHZ/95DB MET 8 X LED GEEL SNELLE TOON5 STUKS

€ 32,95

Excl. BTW: € 27,23

Afbeeldingen



Beschrijving

Features

- Generates a visible and accoustic signal a the same time
- Very good signaling effect
- Built-in drive circuit
- Extended operating voltage range
- Solder lug terminals

Technical Specifications

Operating Temperature Range:	-20...+70°C
Material	
Housing:	Plastic

Pins:

Tin plated brass

Part No.	LED Colour	Tone/Pulse Rate
PK-27A35GQ	Green	Constant
PK-27A35RQ	Red	Constant
PK-27A35YQ	Yellow	Constant
PL-27A30GQ	Green	Slow Pulse 1,2 ¹⁾
PL-27A30RQ	Red	Slow Pulse 1,2 ¹⁾
PL-27A30YQ	Yellow	Slow Pulse 1,2 ¹⁾
PF-27A35GQ	Green	Fast Pulse 3,0
PF-27A35RQ	Red	Fast Pulse 3,0
PF-27A35YQ	Yellow	Fast Pulse 3,0

¹⁾ ±20% @U_N

Part No.	F _O	U _R	U _O	I _C	SPL _{min}
	[kHz]	[V DC]	[V DC]	[mA]	[dB]
PK-27A35GQ	3,5	12	3...15	18	95 ²⁾
PK-27A35RQ	3,5	12	3...15	18	95 ²⁾
PK-27A35YQ	3,5	12	3...15	18	95 ²⁾
PL-27A30GQ	3	12	3...15	25	95 ¹⁾
PL-27A30RQ	3	12	3...15	25	95 ¹⁾
PL-27A30YQ	3	12	3...15	25	95 ¹⁾
PF-27A35GQ	3,5	12	3...15	18	95 ¹⁾
PF-27A35RQ	3,5	12	3...15	18	95 ¹⁾
PF-27A35YQ	3,5	12	3...15	18	95 ¹⁾

F_O = Oscillation Frequency (±0,5), U_R = Rated Voltage, U_O = Operation Voltage Range, I_C = Current Consumption, max. (@ U_R), SPL_{min} = Sound Pressure Level, min. (¹⁾at 30cm @ U_R, ²⁾at 10cm @ U_R)

Labelling



Productinformatie

Artikelnummer	PF27A35YQ
Merk	HITPOINT

