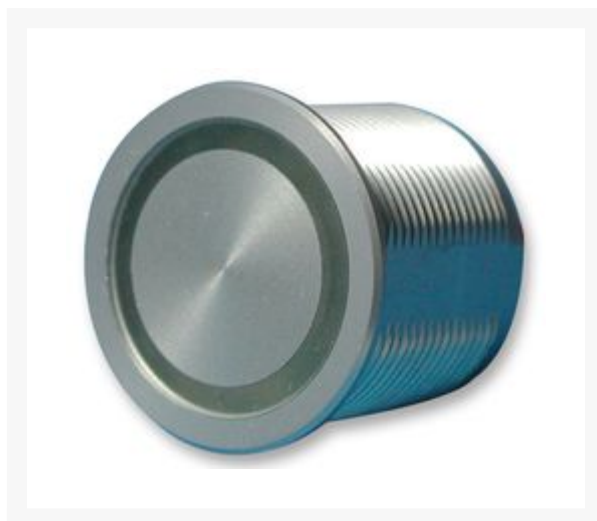


**PIEZO MOMENT SCHAKELAAR 48V/0.1A 1W MAX. ALUMINIUM M22
IP69K MET ROOD/GROEN LEDVERLICHTE RING.**

€ 68,50

Excl. BTW: € 56,61

Afbeeldingen



Beschrijving

Features

- Protection class IP69K
- Hermetically sealed
- Seewater suitable
- Can be cleaned with high-pressure cleaners
- High quality leads to very high cycling rate
- Housing material: anodized aluminium
- Housing colours: red, green and alu natural
- With ring and point illumination or not illuminated
- With pin, quick connect or flexible wire terminal

Technical Specifications

Material

Housing:

Anodized Aluminium

Contacts:	Silver-plated
Switching Voltage, Max.:	42VAC/60VDC
Switching Current, Max.:	100mA
Switching Capacity, Max.:	1W
Contact Resistance:	<20mOhm
Capacity:	30pF
NO Pulse Time:	20...1000ms
Contact Configuration:	Polarity-free
Contact:	NO
Supply Voltage LED:	24V
Operating Force:	1-3N ¹⁾
Operating Path:	0,002mm
Operating Life/Cycles:	20x10 ⁶
Temperature Range:	-40...+85°C
Protection Against Mechanical Strain	
DIN EN 50102, MSM19, 22:	IKO2
Protection Class:	IP69K

¹⁾ At Temperatures Lower -10°C, The Actuating Force Increases 2- to 4-times

Selection Table

Part Nr.	PSE_	Terminals	Housing Colour	Illumination
1241-2411-3	M16	Pins	Red	-
1241-2411-5	M16	Pins	Green	-
1241-2411-8	M16	Pins	Natural	-
1241-3005	M22	Pins	Red	-
1241-3006	M22	Pins	Green	-

1241-3008	M22	Pins	Natural	-
1241-3020-M	M22	Connector	Natural	Point Red
1241-3258	M22	Wire	Natural	Ring Red/Green
1241-3011	M27	Wire	Natural	Ring Red/Green

Productinformatie

Artikelnummer	1241-3258
Merk	SCHURTER

