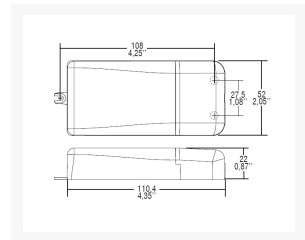


MINI MD LED DRIVER 16-28VDC 700MA 20W DIMBAAR

€ 21,18

Excl. BTW: € 17,50

Afbeeldingen



Model	Output Voltage (V)	Output Current (mA)	Power (W)	Dimensions (mm)	Weight (g)
MD-16-28V	16-28	700	20	19.8 x 4.25 x 2.5	0.87

Beschrijving



EIJLANDER
the best in electronics!

Features

- IP20 independent driver, for indoor use (MINI MD).
- Class II protection against electric shock for direct or indirect contact (MINI MD).
- Driver for built-in use (MINI MD BI).
- It can be used for lighting equipment in protection class I and II (MINI MD BI).
- Active Power Factor Corrector.
- Current regulation $\pm 8\%$ including temperature variations.
- Supplied with terminal cover and cable retainer (MINI MD).
- Input and output terminal blocks on the same side (wire cross-section up to 1,5 mm² / AWG15).
- Clamping screws on primary and secondary circuits for cables with diameter: min. 3 mm - max. 8 mm (MINI MD).
- Driver can be secured with slot for screws.
- Protections:
 - against overheating and short circuits;
 - against mains voltage spikes;
 - against overloads.
- Thermal protection = C.5.a.

Productinformatie

Artikelnummer	127034
Merk	TCI

