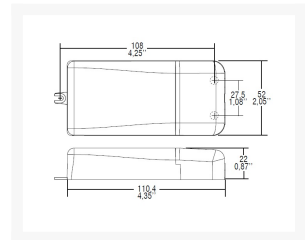


MINI MD LED DRIVER 25-51VDC 350MA 18W DIMBAAR

€ 19,95

Excl. BTW: € 16,49

Afbeeldingen



Model	Output Power (W)	Input Voltage Range (V)	Output Current (mA)	Dimensions (mm)	Weight (g)
MD-18-25-51	18	25-51	350	19.8 x 4.25 x 2.5	0.8
MD-18-25-51-D	18	25-51	350	19.8 x 4.25 x 2.5	0.8
MD-18-25-51-D	18	25-51	350	19.8 x 4.25 x 2.5	0.8
MD-18-25-51-D	18	25-51	350	19.8 x 4.25 x 2.5	0.8
MD-18-25-51-D	18	25-51	350	19.8 x 4.25 x 2.5	0.8

Beschrijving



EIJLANDER
the best in electronics!

Features • IP20 independent driver, for indoor use (MINI MD). • Class II protection against electric shock for direct or indirect contact (MINI MD). • Driver for built-in use (MINI MD BI). • It can be used for lighting equipment in protection class I and II (MINI MD BI). • Active Power Factor Corrector. • Current regulation $\pm 8\%$ including temperature variations. • Supplied with terminal cover and cable retainer (MINI MD). • Input and output terminal blocks on the same side (wire cross-section up to 1,5 mm² / AWG15). • Clamping screws on primary and secondary circuits for cables with diameter: min. 3 mm - max. 8 mm (MINI MD). • Driver can be secured with slot for screws. • Protections: - against overheating and short circuits; - against mains voltage spikes; - against overloads. • Thermal protection = C.5.a.

Productinformatie

Artikelnummer	127030
Merk	TCI

