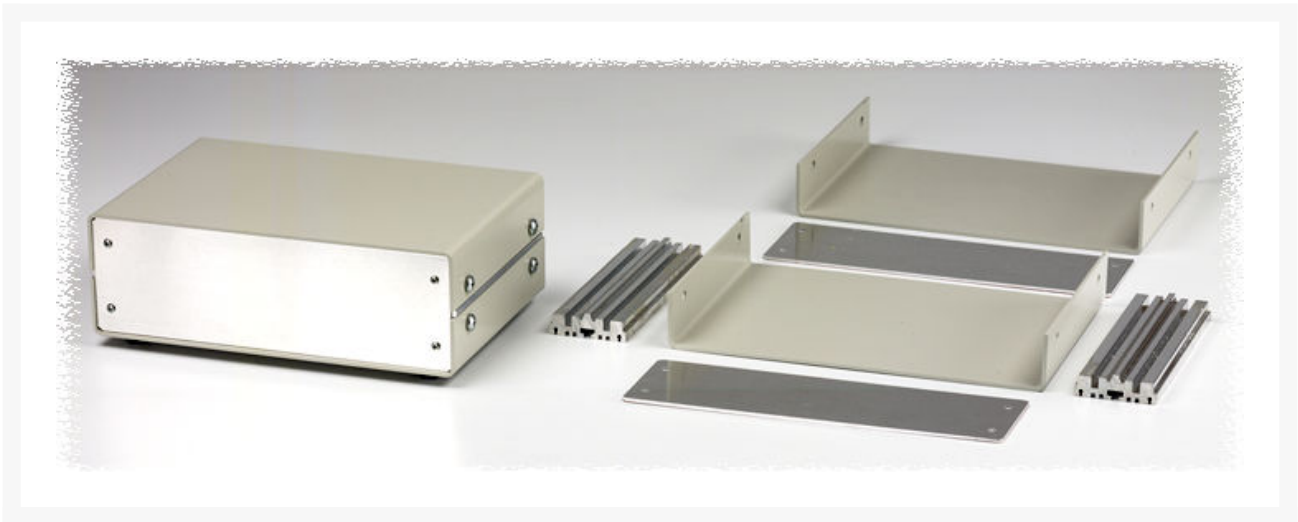


KAST GRIJS ALUMINIUM 181X185X60MM

€ 74,95

Excl. BTW: € 61,94

Afbeeldingen



Beschrijving

Top and bottom made from 12 gauge aluminum finished in contemporanea grey.

Top and bottom are attached to an internal aluminum extrusion which contains mounting slots for printed circuit boards or panels.

Front and rear panels are natural aluminum (paper coated one side) which are attached with screws to the aluminum mounting extrusion.

Panels can be easily removed for access to components.

Tops and bottoms are available in solid or with vent slots.

All hardware and self-adhesive rubber feet are included.

Productinformatie

Artikelnummer	HA1402D
Merk	HAMMOND
Is on Sale	Nee

