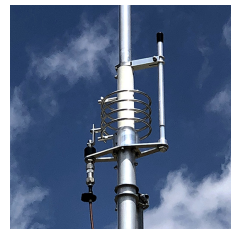


ANTENNE BASIS 27MHZ 1/2 2.15DBI

€ 199,95

Excl. BTW: € 165,25

Afbeeldingen



Beschrijving

1/2 λ vertical antenna fed at the base, tunable from 26 to 30 MHz by adjusting the whip length and fine-tuning at the base by means of a PTFE insulated high voltage variable capacitor (40 kV). Extremely robust construction in AW6063-T66 aluminum alloy and CNC machined parts from solid stock. Supplied with high-quality 304 and 316 stainless steel fasteners for long rust-free operating life. High input power, up to 3 kW continuous All-mode.

For this product, we have made a special parallel LC circuit to adapt the high impedance presented by this type of antenna when it is fed at the base.

The high-Q coil is generously sized, suspended in air, with widely spaced coils and no metal cores. The coaxial variable capacitor (similar to a Gamma Match) is located at the base next to the coil for easy tuning. Made with PTFE insulation, it can withstand extremely high voltages exceeding 40kV, and it is insensitive to ambient temperature, rain and humidity and does not heat up when subjected to high power.

The HW10V antenna connector is not the commercial SO-239 type used by most manufacturers. Our connector is designed and built directly by ourselves; it has a true 50 Ohm characteristic impedance and is rated up to 500 MHz.

We have created a reliable connector capable of withstanding 5 kW of continuous RF power at 30 MHz and greater than 3 kW at 50 MHz. The body is made of CW614N nickel-plated brass, while the pin is plated in 24K gold to avoid oxidation and equipped with a 4-fin insulator that maintains its centering and elasticity, avoiding contact losses. The insulating material is PTFE, one of the best insulators.

The anchor bracket is made of 2.5 mm-thick AISI 304 stainless steel and is attached to the antenna tube by means of a clamping system, creating an extremely robust mechanical lock. The mast coupler consists of an M6 V-Bolt in AISI 304 steel and column nuts for easy, secure tightening.

Electrical data

- Electrical type: 1/2 λ End fed vertical dipole
- Gain: 0 dBd - 2.15 dBi
- VSWR: $\leq 1.2:1$
- Bandwidth: ≥ 1.7 MHz at 28MHz
- Maximum continuous power: 3000 Watts (CW)
- Impedance: 50 Ohm
- Polarization: Linear vertical

- Materials: Aluminum Alloy AW6063-T66 hard drawn tube, Fiberglass, Brass, PTFE. All hardware are made of SS AISI-304 and 316
- Mast \varnothing : 40 - 54 mm
- Max wind resistance: 130 km/h
- Height: 5940 mm (including bracket)
- Weight: 3100 gram
- Mounting type: On mast
- Antenna connector: UHF-female, PTFE insulator & gold plated central pin

Artikelnummer	HW10V
Merk	GRAZIOLI
Is on Sale	Nee

